



16 Lady Tyree Place Braemar NSW

Introducing a premier collection of brand-new industrial units, purposefully designed for both astute investors and forward-thinking owner-occupiers - with construction now well underway and panels already lifting on site.

Positioned at the gateway to the Southern Highlands, BetterSpaces delivers a compelling blend of flexibility and functionality, providing the ideal platform for your next venture, expansion, or long-term investment.

Key Features:

- Unit sizes ranging from 32 - 115 sqm
- Flexible, efficient layouts to suit a variety of uses
- Invest or occupy - tailored to your strategy

[For full version visit the website](https://www.carltonrealestate.com.au)

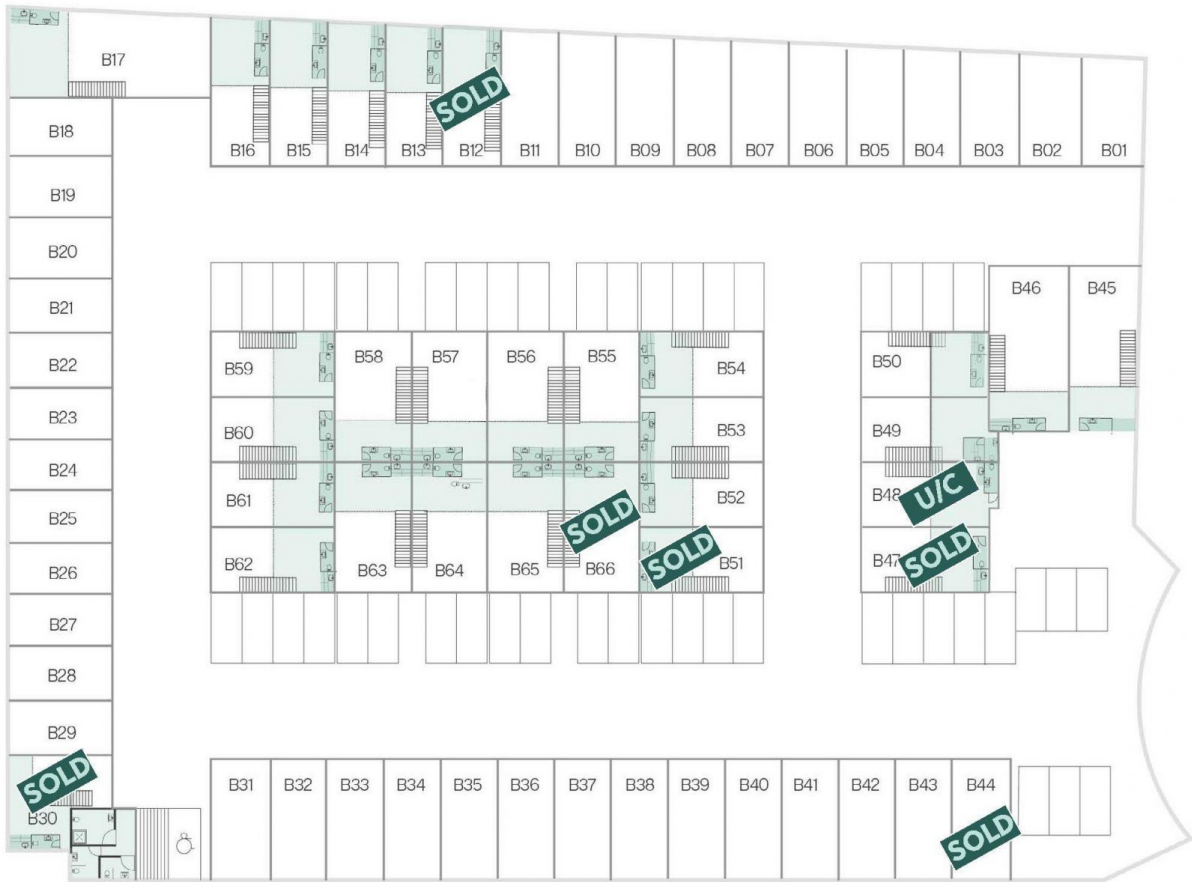
Type : Industrial
Price : Contact Agent
Building Size : 32 sqm
View : <https://www.carltonrealestate.com.au/sale/nsw/southern-highlands/braemar/commercial/industrial/8705117>



Emma-Jane Carswell
0414 958 960



Simon Pikkat
02 4871 2622



EST 1982

CARLTON

REAL ESTATE