



7 Lady Tyree Place Braemar NSW

An outstanding opportunity to secure a premium 1,919m² industrial landholding within one of the Southern Highlands' most tightly held and fastest growing business precincts.

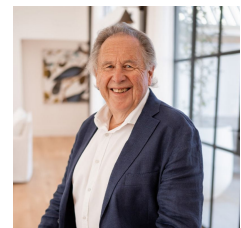
Strategically positioned at the gateway to the Southern Highlands, this high-profile site offers immediate access to the Hume Highway, providing seamless connectivity to Sydney, Canberra and surrounding regional centres.

Zoned E4 General Industrial, the property provides flexibility for a wide variety of industrial and commercial uses, making it ideally suited to owner-occupiers, developers and investors looking to capitalise on the continued growth of this thriving commercial hub.

Type : Development
Price : \$1,295,325
Land Size : 1919 sqm
View : <https://www.carltonrealestate.com.au/sale/nsw/southern-highlands/braemar/commercial/development/8697568>

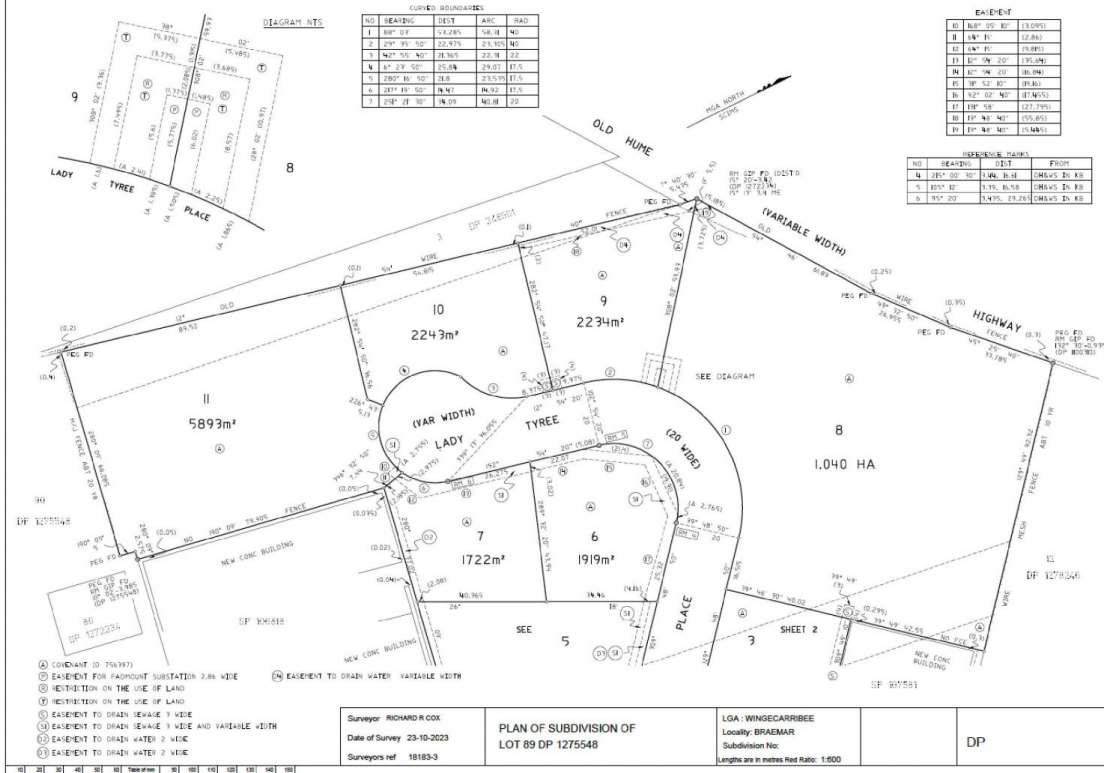


Emma-Jane Carswell
0414 958 960



Arvo Pikkat
02 4871 2622

[For full version visit the website](https://www.carltonrealestate.com.au)



carlton

7 Lady Tyree Place, Braemar

*Indicative only.

All information contained herein is gathered from sources we believe to be reliable. However, we cannot guarantee its accuracy and interested persons should rely on their own enquiries. Some images may contain digital furniture.