



2/11 Pikkat Drive Braemar NSW

10 🚗

Discover your ideal workspace solution at Braemar. This open-plan workspace spread across two floors offers convenience and functionality, ready for your immediate use.

Situated in a prime E4 industrial area, this strata unit boasts easy access to the Hume Highway ensuring seamless connectivity for your business operations.

Key Features:

- Spacious boardroom for collaborative meetings
- Additional meeting room/office space
- Convenient bathroom facilities x 3
- Well-equipped kitchenette for refreshments
- Personnel lockers for secure storage
- Open-plan workspace with integrated workstations

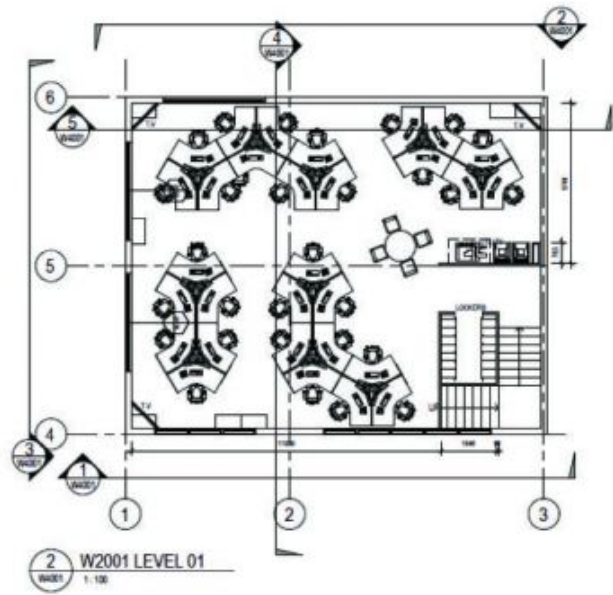
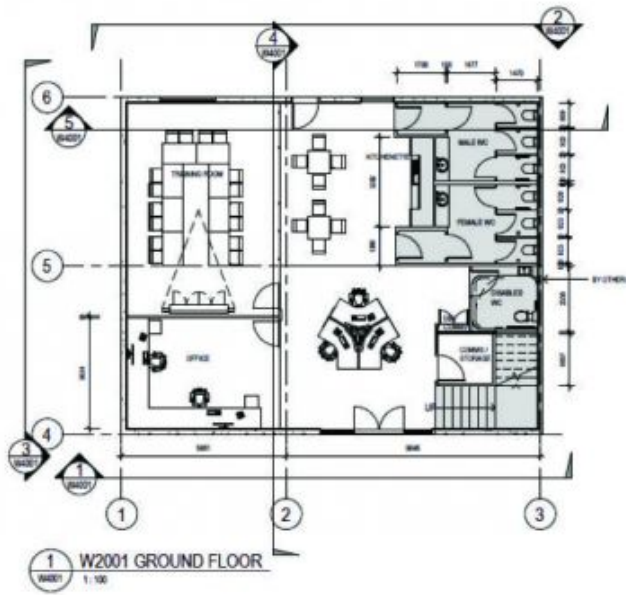
Price : Contact Agent
Building Size : 344 sqm
View : <https://www.carltonrealestate.com.au/sale/nsw/southern-highlands/braemar/commercial/offices/7934420>



Emma-Jane Carswell
02 4871 2622

<https://www.carltonrealestate.com.au>

We are one of the longest running, award-winning real estate agencies in the Southern Highlands.



CST 1000
CARLTON 2/11 PIKKAT DRIVE, BRAEMAR
 REAL ESTATE

*Scale in metres. Indicative only. Dimensions are approximate.

All information contained herein is gathered from sources we believe to be reliable. However, we cannot guarantee its accuracy and interested persons should rely on their own enquiries. Some images may contain digital furniture.