

## 2/11 Pikkat Drive Braemar NSW

Welcome to 2/11 Pikkat Drive.

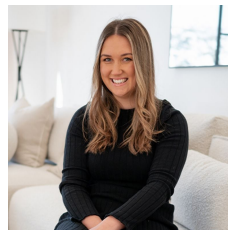
We have on offer this open plan workspace located over 2 floors which is ready for you to move in.

Located in a sought-after industrial area, this strata unit is just minutes from the Hume Highway on/off ramp.

Features include:

- boardroom
- additional meeting room/office
- bathroom facilities
- kitchenette
- personnel lockers
- open plan workspace with inbuilt work stations
- sensor lighting
- ducted air conditioning

**Price** : Contact Agent  
**Building Size** : 344 sqm  
**View** : <https://www.carltonrealestate.com.au/lease/nsw/southern-highlands/braemar/commercial/offices/7700045>



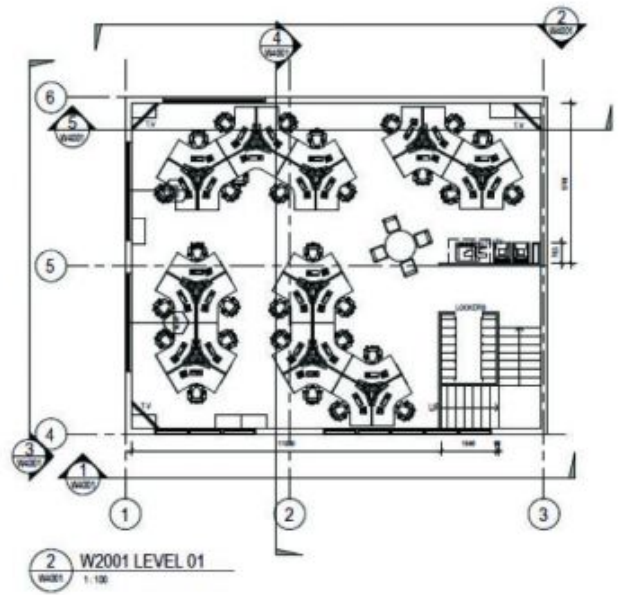
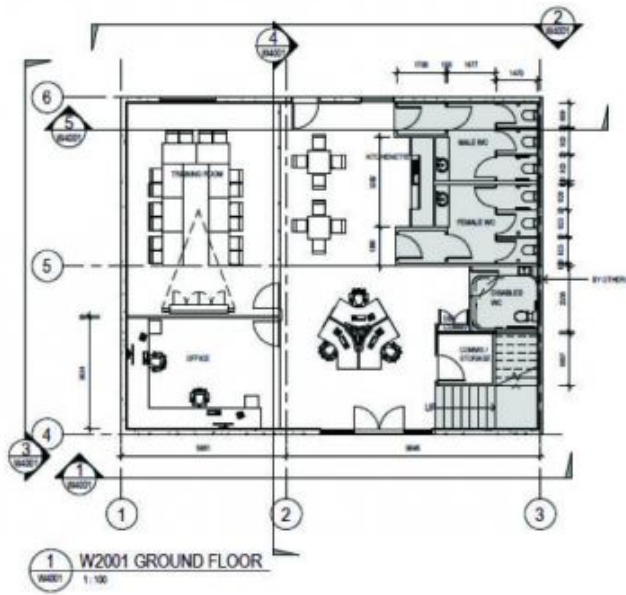
**Rhiannon Hurst**  
02 4872 5555



**Emma-Jane Carswell**  
02 4871 2622

<https://www.carltonrealestate.com.au>

We are one of the longest running, award-winning real estate agencies in the Southern Highlands.



CST 1000  
**CARLTON** 2/11 PIKKAT DRIVE, BRAEMAR  
 REAL ESTATE

\*Scale in metres. Indicative only. Dimensions are approximate.

All information contained herein is gathered from sources we believe to be reliable. However, we cannot guarantee its accuracy and interested persons should rely on their own enquiries. Some images may contain digital furniture.