

## 1/12 Tyree Place Braemar NSW

5 🚗

Large, light filled dedicated mezzanine office, with carpet, air conditioning and ample windows providing a space you want to work in.

Boasting modern facilities designed to accommodate various business needs. This property also features high ceilings, entry foyer, eat in kitchen, and bathrooms ensuring a comfortable environment.

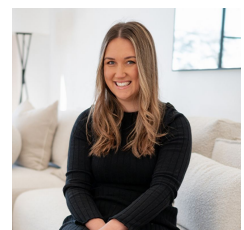
Prime location near the freeway makes it incredibly easy to reach from any direction. Whether you're a business owner looking to move or an individual seeking a secure space for your personal belongings, our property offers hassle-free access for loading and unloading your items.

High visibility at the front of the secure complex, this property goes beyond the basics to offer additional

**Price** : Contact Agent  
**Building Size** : 335 sqm  
**View** : <https://www.carltonrealestate.com.au/lease/nsw/southern-highlands/braemar/commercial/industrial/7637431>



**Emma-Jane Carswell**  
**02 4871 2622**



**Rhiannon Hurst**  
**02 4872 5555**

<https://www.carltonrealestate.com.au>

We are one of the longest running, award-winning real estate agencies in the Southern Highlands.

## UNIT 01.

**GROUND FLOOR** 265 SQM  
**MEZZANINE AREA** 70 SQM



The measurements provided in the floor plan are approximate and intended for illustrative purposes only. Although we have confidence in the accuracy of the floor plan, we cannot offer any assurance, warranty, or representation regarding its completeness and accuracy.

