



**2/28 Priestley Street Mittagong NSW**

**4** 

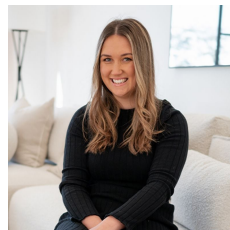
Located in a thriving industrial hub, this large factory has plenty to offer.

Features:

- High ceilings and ample natural light
- Well-maintained and secure premises
- Reception area and front office
- Flexible layout to suit various business needs
- Easy access for loading and unloading
- Dedicated parking spaces for staff and visitors
- Close proximity to transport and amenities
- Three phase power
- Hi-bay lights throughout

**\*\* PLEASE NOTE FACTORY SIZE TO BE CONFIRMED \*\***

**Building Size** : 630 sqm  
**View** : <https://www.carltonrealestate.com.au/lease/nsw/southern-highlands/mittagong/commercial/industrial/7596865>



**Rhiannon Hurst**  
**02 4872 5555**

<https://www.carltonrealestate.com.au>

We are one of the longest running, award-winning real estate agencies in the Southern Highlands.