



## 6B Pikkat Drive Braemar NSW

42 🚗

Carlton Real Estate is excited to present 'The Gateway', this brand-new, state of the art business facility located in Highlands Business Park at the gateway to the Southern Highlands.

### Features Include:

- State of the art storage/logistics facility offering premium warehouse and office space.
- Multiple tenancies available from 180 sqm - 478 sqm with each warehouse offering office space ranging from 58 sqm to 171 sqm.
- B-Double compatible street frontage across Pikkat Drive with a dual access on Tyree Place and Pikkat Drive.
- Multiple configuration opportunities available offering flexibility and future expansion opportunities.
- Undercover loading areas providing for all weather loading and unloading.

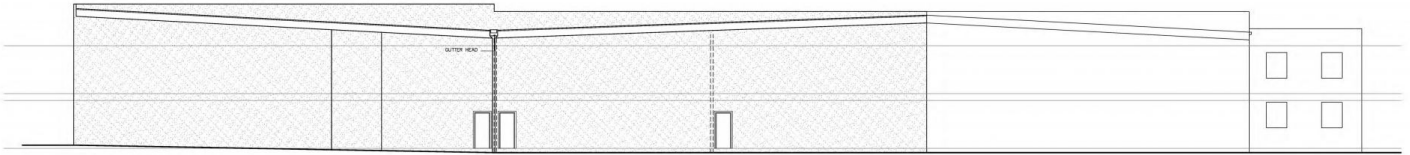
**Building Size** : 1190 sqm  
**View** : <https://www.carltonrealestate.com.au/lease/nsw/southern-highlands/braemar/commercial/industrial/7222788>



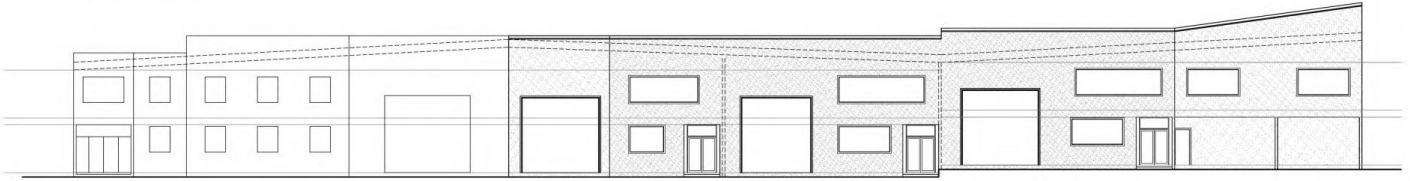
**Emma-Jane Carswell**  
**02 4871 2622**

<https://www.carltonrealestate.com.au>

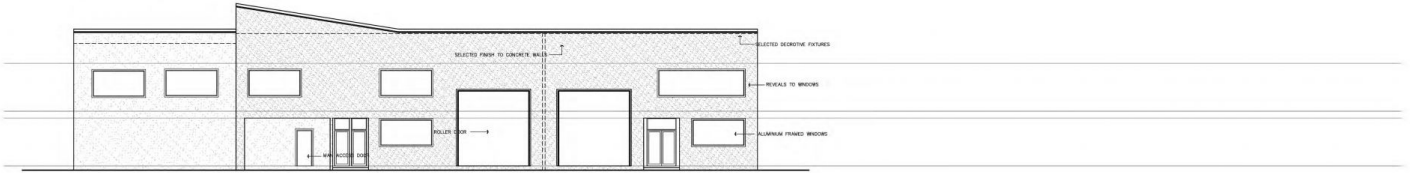
We are one of the longest running, award-winning real estate agencies in the Southern Highlands.



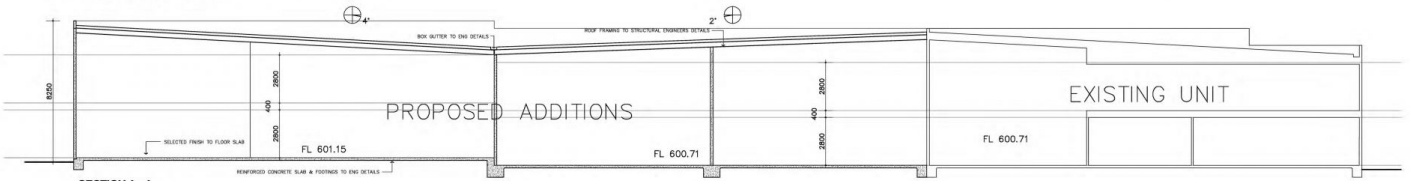
SOUTH EAST ELEVATION



NORTH WEST ELEVATION



NORTH WEST ELEVATION



SECTION A - A

Typical provisions to be used in preference to details of drawings.  
 Material to be used shall be of the best quality and condition as the job requires.  
 All materials and workmanship shall be in strict accordance with manufacturers' instructions and specifications, as specified on the drawings.  
 © M.L.G. DESIGN - Architectural Drafting Services  
 All rights reserved. No part of this drawing may be reproduced in any form without the prior permission of the copyright owner.

<p><b>PROPOSED FACTORY ADDITIONS</b>          AT LOT 35 PINEY CREEK          BUNEMAN          FOR  <b>WILLOW PROPERTIES</b>          WORKING DRAWINGS          ELEVATIONAL SECTION</p>	<p><b>MLG DESIGN</b>          ARCHITECTURAL DRAFTING SERVICES          P.O. BOX 480 MICKS VALE, N.S.W. 2877          PH: 4883 2222 FAX: 4883 2824          MOBILE: 0412 460 291</p>
--	---