

1/6 Tyree Place Braemar NSW

30 

Unit 1 - SOLD

The opportunity to acquire the Southern Highlands newest mid to large sized factory units is on exclusive offer from Carlton Real Estate.

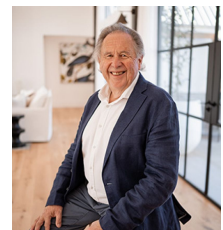
Boutique Secure Complex of 8 Strata Units. Located next door to Bunnings, with direct freeway access.

- * Unit 1 is 392m²
- * Ranging in size from 270m² to 392m²
- * Intimate complex of 8
- * Generous mezzanine storage levels to maximise your workspace
- * Excellent vehicle access with a wide driveway
- * Secure gated complex
- * High Factory internal clearances of 6+ metres

Price : \$ 1,078,000
Land Size : 4000 sqm
View : <https://www.carltonrealestate.com.au/sale/nsw/southern-highlands/braemar/commercial/industrial/6562131>



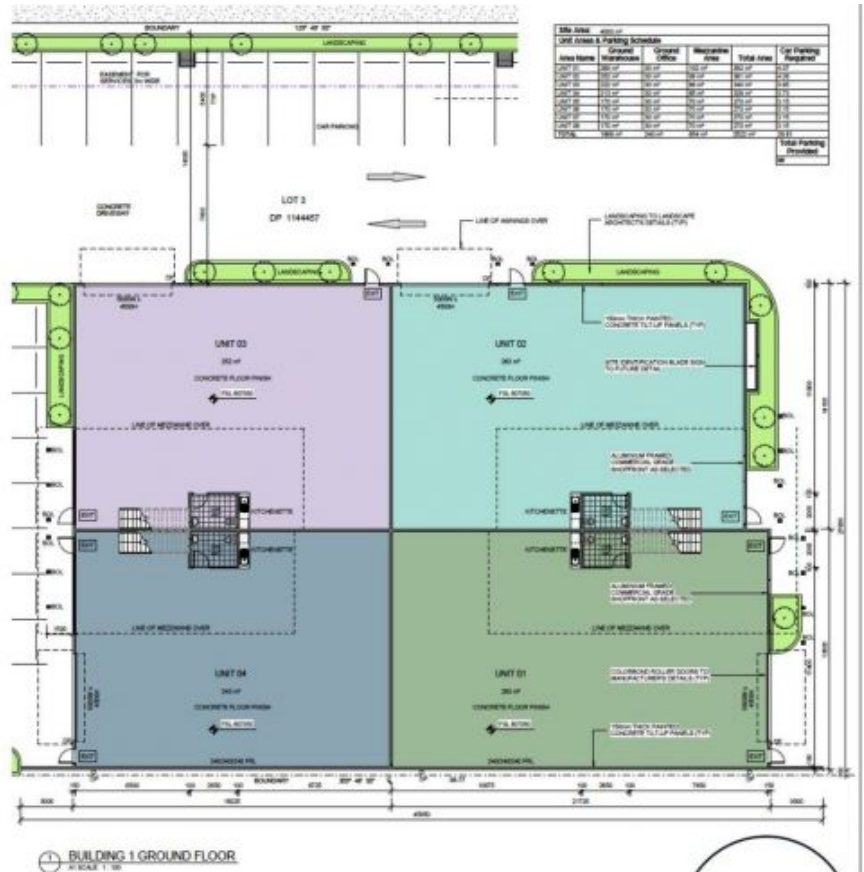
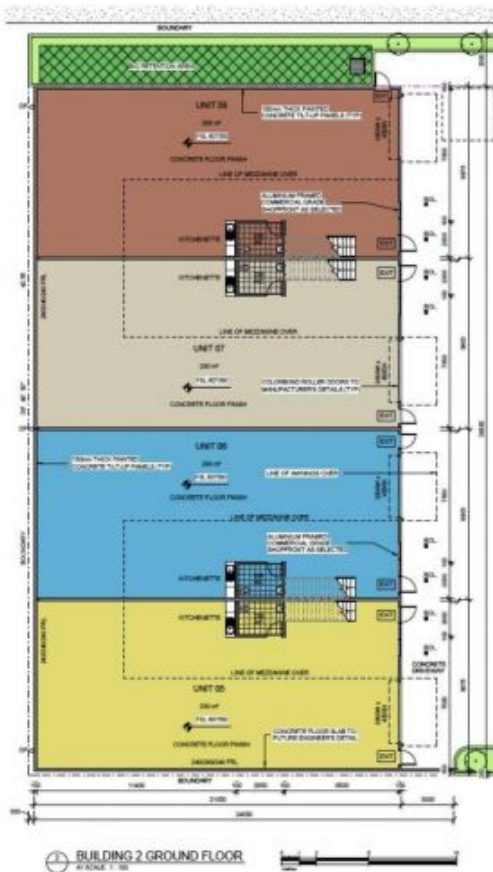
Emma-Jane Carswell
02 4871 2622



Arvo Pikkat
02 4871 2622

<https://www.carltonrealestate.com.au>

We are one of the longest running, award-winning real estate agencies in the Southern Highlands.

[illegible]