



10 Crimea Street Balaclava NSW

3 2 1

The 923sqm level block with all services presents a magnitude of options and being only minutes to the Hume Highway affords a comfortable commute to Sydney. If you are a first home buyer or a down sizer with a flair for renovating, this property represents a great opportunity to capitalise on its convenient address.

Features Include:

- 3 beds, main with robe and ensuite.
- Spacious main bathroom, with shower, bath and a separate toilet.
- Laundry has external access to rear garden.
- A paved alfresco area links the family room to the peaceful rear garden.
- Two living rooms and a single garage with internal access complete the package.

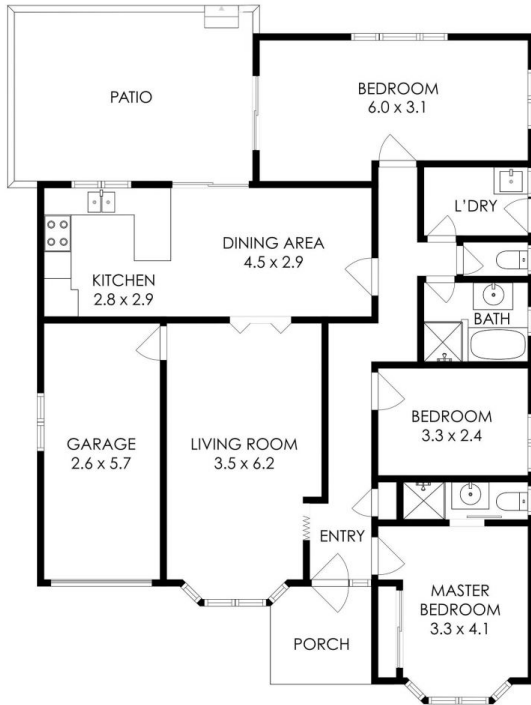
Price : \$ 675,000
Building Size : 120 sqm
Land Size : 923 sqm
View : <https://www.carltonrealestate.com.au/sale/nsw/southern-highlands/balaclava/residential/house/6347721>



Mark Walters
02 4871 2622

<https://www.carltonrealestate.com.au>

We are one of the longest running, award-winning real estate agencies in the Southern Highlands.



FLOOR PLAN AREA 120 m²

10 CRIMEA STREET, BALACLAVA

Floor plan measurements are approximate and are for illustration purposes only. Floor plan by Highlands Photography highlandsphtography.com.au. Whilst all reasonable care has been taken in providing this information related companies and their representatives, consultants and agents accept no responsibility for the accuracy of any information contained herein or for any action taken in reliance thereon by any third party whether purchaser, potential purchaser or otherwise.

CARLTON REAL ESTATE