



**10 Isedale Road Balaclava NSW**

4 2 2

A prized opportunity awaits to become the first people to live in this impeccable, as-new family home of quality, style and understated elegance. Custom-built in an engaging colonial style to reflect its Highlands address, this distinctive, bright and contemporary property boasts a welcoming warmth and fresh, light-filled interiors embracing open plan living as well as a seamless connection with the outdoors.

**Price** : \$ 960,000  
**Building Size** : 299 sqm  
**Land Size** : 760.8 sqm  
**View** : <https://www.carltonrealestate.com.au/sale/nsw/southern-highlands/balaclava/residential/house/6101455>

Imbued with stylish appointments and captivating country accents, this flawless residence was purposely designed to fit the block, maximising its footprint on an easy care 761sqm property. Previously a display house and wrapped in a calming, sky-blue veneer, this wonderful oasis of colonial charm can now be yours to enjoy the comforts of effortless family living.



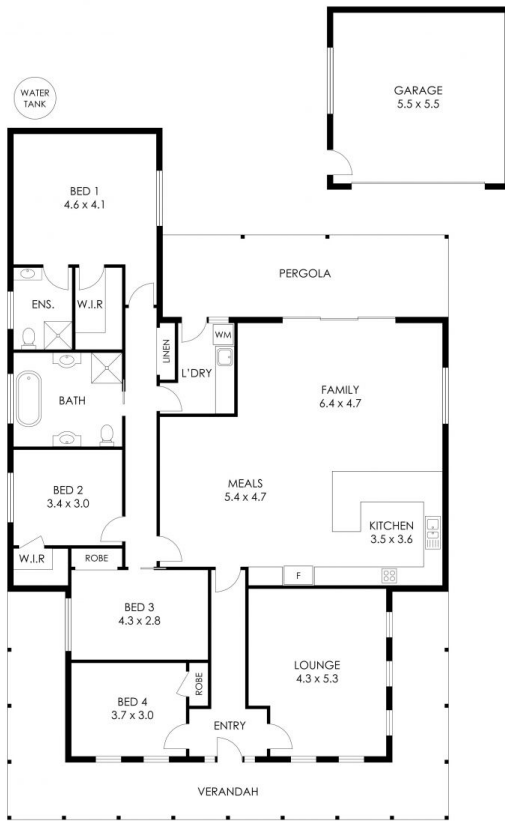
**Mark Walters**  
**02 4871 2622**



**Jenny Bailey**  
**02 4871 2622**

<https://www.carltonrealestate.com.au>

We are one of the longest running, award-winning real estate agencies in the Southern Highlands.



## 10 ISEDALE ROAD, BRAEMAR

Floor plan measurements are approximate and are for illustration purposes only. Floor plan by Highlands Photography [highlandsphotography.com.au](http://highlandsphotography.com.au)  
 Whilst all reasonable care has been taken in providing this information related companies and their representatives, consultants and agents accept no responsibility for the accuracy of any information contained herein or for any action taken in reliance thereon by any third party whether purchaser, potential purchaser or otherwise.

**CARLTON REAL ESTATE**