

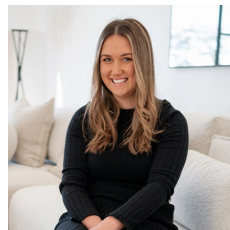
**16 Soma Avenue Bowral NSW**

4 🏠 2 🚗 2 🚗

Make your journey down a private tree lined driveway to find this unique split-level family home bursting with character, offering a wonderful lifestyle for a new family to call home.

The split level floor plan offers versatility of living across three separate light filled living areas. On the ground floor you'll find a cinema room, study, powder room, a large laundry, internal access to the large double garage and a sunken main bedroom with a generous walk-in robe, ensuite heated towel rail and heated floors. At the heart of the home on the lower level you'll love the combined kitchen, dining / family room with enormous bi-fold doors giving incredible views to the North, South and West, the sunsets are nothing short of breath taking. The stunning modern kitchen boasts a large six gas burner Smeg stove, Caesar stone bench tops with waterfall edges, dishwasher,

**Land Size** : 7239 sqm  
**View** : <https://www.carltonrealestate.com.au/lease/nsw/southern-highlands/bowral/residential/house/5813690>



**Rhiannon Hurst**  
**02 4872 5555**



**Lee Astill**  
**02 4872 5555**